

I posted a similar question a few weeks ago, but have greatly simplified the example and still have the problem.

We are upgrading from SC 6 to SC 11 and seeing some different results when the application runs under Eclipse/Apache 6 and then is deployed on our Oracle iPlanet Web server 7.0

We are running SmartClient_v110p_2016-08-11_LGPL client side only, and everything was working under SC 6 until IE 11 came out and we started seeing some scroll bar problems with some of our lists.

I am having a problem with ListGrids not showing the scroll bar under IE10 & 11, but working fine in FireFox. It also works with IE and Firefox under your JDK apache setup on my PC viewing the examples and my Eclipse tomcat setup, but not on my webserver. See the attached word document for a complete explanation, screen shots, and some requests for information.

Originally I was using a Sun web server with our full application and customizations, but when we hit this problem I set up a vanilla system with the following:

Solaris 10 running on Sun hardware

Apache tomcat binary install – 8.5.4

JDK 1.8.0_101

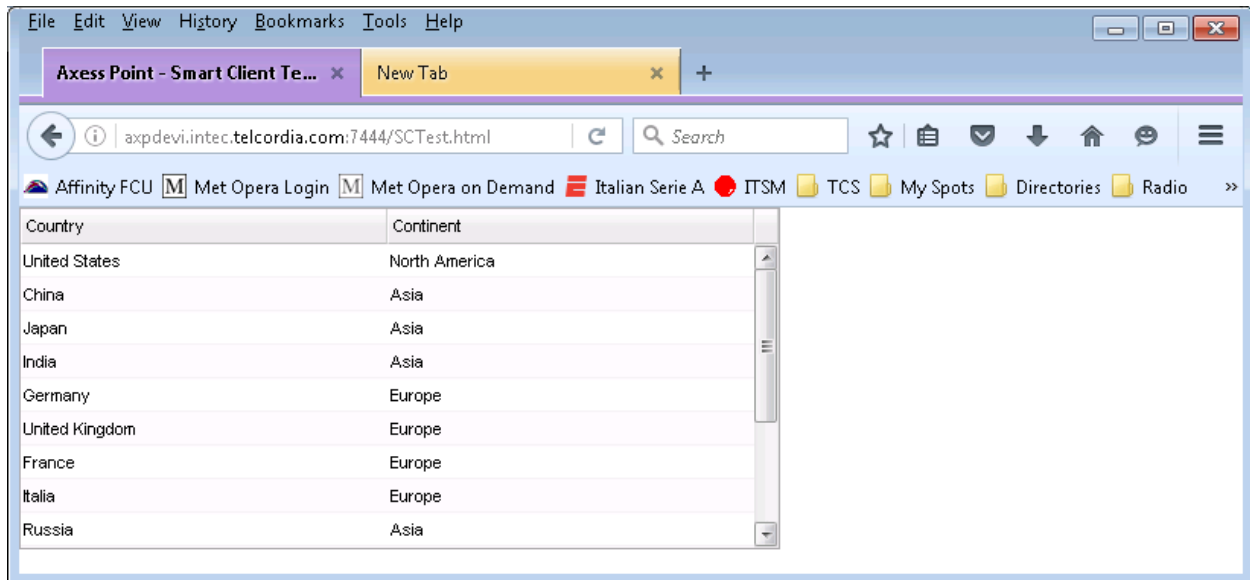
Used the isomorphic folder as is from SmartClient_v110p_2016-08-11_LGPL SDK and just deleted all of the skins except Enterprise.

Under the default tomcat webapps/ROOT web app, I added the isomorphic folder, and two files: SCTest.html and SCTest.jsp with a copy of your ListGrid example, with just the flag field removed since I didn't have the images. Source code is at the end of this file.

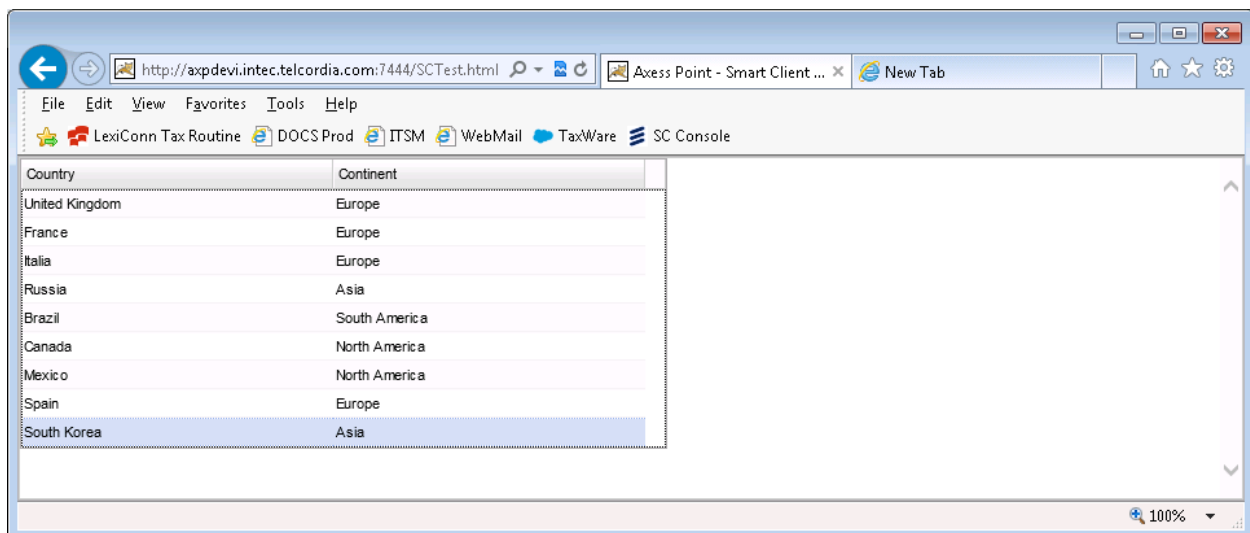
With the vanilla setup, Firefox 48.0.2 and previous versions work fine, but IE 10 & 11 do not show the scroll bar. You can select an item in IE and then use the arrow keys to navigate the list, so all of the data is there, just no scroll bar. It works the same way whether .html or .jsp is used.

I cleared browser cache and started with fresh browser windows. Here are the screen shots:

Firefox



IE 10



I originally thought that some of our customizations, the AJAX setup, or some of the complicated nesting of SC objects was part of the problem within our application, but this simple example also doesn't work. This is the simplest configuration I can come up with to test out the problem.

Can you provide any insights into what could be causing this to happen?

Do you have the ability to test this on your end on a Unix/Linux OS to see if you experience the same issue (even though I don't see how that should make any difference)?

We are trying to move our application into production and this is the last problem we need to resolve, so any direction you can provide would be greatly appreciated.

Source code, same data in .html and .jsp files.

```
<HTML><HEAD>
  <SCRIPT>var isomorphicDir="isomorphic/";</SCRIPT>
  <SCRIPT SRC=isomorphic/system/modules/ISC_Core.js></SCRIPT>
  <SCRIPT SRC=isomorphic/system/modules/ISC_Foundation.js></SCRIPT>
  <SCRIPT SRC=isomorphic/system/modules/ISC_Containers.js></SCRIPT>
  <SCRIPT SRC=isomorphic/system/modules/ISC_Grids.js></SCRIPT>
  <SCRIPT SRC=isomorphic/system/modules/ISC_Forms.js></SCRIPT>
  <SCRIPT SRC=isomorphic/system/modules/ISC_DataBinding.js></SCRIPT>
  <SCRIPT SRC=isomorphic/skins/Enterprise/load_skin.js></SCRIPT>
</HEAD><BODY>
<SCRIPT>
//*****
/* Define page title
//*****
document.title = "Axess Point - Smart Client Test Page";

//*****
/* Define content of page
//*****
isc.ListGrid.create({
  ID: "countryList",
  width:500, height:224, alternateRecordStyles:true,
  canEdit:true, editEvent:"click", modalEditing:true,
  fields:[
    {name:"countryName", title:"Country"},
    {name:"continent", title:"Continent",
      valueMap:["Europe", "Asia", "North America", "Australia/Oceania", "South America", "Africa"]}
  ]
},
data: [
{
  continent:"North America",
  countryName:"United States",
  countryCode:"US",
  area:9631420,
  population:298444215,
  gdp:12360.0,
  independence:new Date(1776,6,4),
  government:"federal republic",
  government_desc:2,
  capital:"Washington, DC",
  member_g8:true,
  article:"http://en.wikipedia.org/wiki/United_states"
},
{
  continent:"Asia",
  countryName:"China",
  countryCode:"CH",
  area:9596960,
```

```
population:1313973713,
gdp:8859.0,
government:"Communist state",
government_desc:0,
capital:"Beijing",
member_g8:false,
article:"http://en.wikipedia.org/wiki/China"
},
{
continent:"Asia",
countryName:"Japan",
countryCode:"JA",
area:377835,
population:127463611,
gdp:4018.0,
government:"constitutional monarchy with parliamentary government",
government_desc:1,
capital:"Tokyo",
member_g8:true,
article:"http://en.wikipedia.org/wiki/Japan"
},
{
continent:"Asia",
countryName:"India",
countryCode:"IN",
area:3287590,
population:1095351995,
gdp:3611.0,
independence:new Date(1947,7,15),
government:"federal republic",
government_desc:2,
capital:"New Delhi",
member_g8:false,
article:"http://en.wikipedia.org/wiki/India"
},
{
continent:"Europe",
countryName:"Germany",
countryCode:"GM",
area:357021,
population:82422299,
gdp:2504.0,
independence:new Date(1871,0,18),
government:"federal republic",
government_desc:2,
capital:"Berlin",
member_g8:true,
article:"http://en.wikipedia.org/wiki/Germany"
},
{
continent:"Europe",
```

```
countryName:"United Kingdom",
countryCode:"UK",
area:244820,
population:60609153,
gdp:1830.0,
independence:new Date(1801,0,1),
government:"constitutional monarchy",
government_desc:1,
capital:"London",
member_g8:true,
article:"http://en.wikipedia.org/wiki/United_kingdom"
},
{
continent:"Europe",
countryName:"France",
countryCode:"FR",
area:547030,
population:60876136,
gdp:1816.0,
government:"republic",
government_desc:5,
capital:"Paris",
member_g8:true,
article:"http://en.wikipedia.org/wiki/France"
},
{
continent:"Europe",
countryName:"Italia",
countryCode:"IT",
area:301230,
population:58133509,
gdp:1698.0,
independence:new Date(1861,2,17),
government:"republic",
government_desc:5,
capital:"Rome",
member_g8:true,
article:"http://en.wikipedia.org/wiki/Italy"
},
{
continent:"Asia",
countryName:"Russia",
countryCode:"RS",
area:17075200,
population:142893540,
gdp:1589.0,
independence:new Date(1991,7,24),
government:"federation",
government_desc:3,
capital:"Moscow",
member_g8:true,
```

```
    article:"http://en.wikipedia.org/wiki/Russia"
  },
  {
    continent:"South America",
    countryName:"Brazil",
    countryCode:"BR",
    area:8511965,
    population:188078227,
    gdp:1556.0,
    independence:new Date(1822,8,7),
    government:"federative republic",
    government_desc:3,
    capital:"Brasilia",
    member_g8:false,
    article:"http://en.wikipedia.org/wiki/Brazil"
  },
  {
    continent:"North America",
    countryName:"Canada",
    countryCode:"CA",
    area:9984670,
    population:33098932,
    gdp:1114.0,
    independence:new Date(1867,6,1),
    government:"constitutional monarchy with parliamentary democracy and federation",
    government_desc:1,
    capital:"Ottawa",
    member_g8:true,
    article:"http://en.wikipedia.org/wiki/Canada"
  },
  {
    continent:"North America",
    countryName:"Mexico",
    countryCode:"MX",
    area:1972550,
    population:107449525,
    gdp:1067.0,
    independence:new Date(1810,8,16),
    government:"federal republic",
    government_desc:2,
    capital:"Mexico (Distrito Federal)",
    member_g8:false,
    article:"http://en.wikipedia.org/wiki/Mexico"
  },
  {
    continent:"Europe",
    countryName:"Spain",
    countryCode:"SP",
    area:504782,
    population:40397842,
    gdp:1029.0,
```

```
independence:new Date(1492,0,1),
government:"parliamentary monarchy",
government_desc:4,
capital:"Madrid",
member_g8:false,
article:"http://en.wikipedia.org/wiki/Spain"
},
{
continent:"Asia",
countryName:"South Korea",
countryCode:"KS",
area:98480,
population:48846823,
gdp:965.3,
independence:new Date(1945,7,15),
government:"republic",
government_desc:5,
capital:"Seoul",
member_g8:false,
article:"http://en.wikipedia.org/wiki/South_korea"
},
{
continent:"Asia",
countryName:"Indonesia",
countryCode:"ID",
area:1919440,
population:245452739,
gdp:865.6,
independence:new Date(1945,7,17),
government:"republic",
government_desc:5,
capital:"Jakarta",
member_g8:false,
article:"http://en.wikipedia.org/wiki/Indonesia"
}
]
});
```

```
</SCRIPT>
</BODY></HTML>
```